

WinTV-HVR-5525 HD Starburst Satellite Receiver

Quick Installation Guide for Windows

Contents of the package

- PCI Express TV tuner
- Remote control transmitter
- Remote control receiver cable
- AV adapter cable (not for Starburst)
- WinTV v10 application for Windows (download with included Activation Code)

Installation of the WinTV card

- Switch off the computer and unplug the power cord. The manufacturer of the PCs has information about opening the housing.
- Remove the housing cover.
- Find a free PCI-Express slot and remove the metal cover of the slot on the back of the PC.
- Insert the WinTV card into the slot and secure it with a screw.
- Mount the housing cover and plug the power plug back in.

Then reboot your PC and continue with the WinTV application installation.

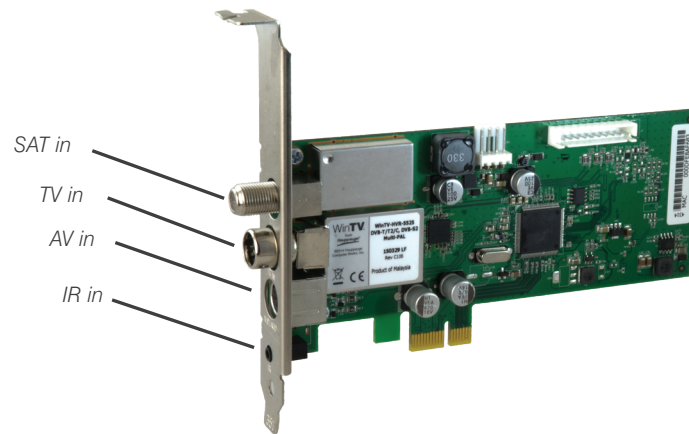
1

WinTV Board Connections

With Starburst HD you can receive DVB-S and DVB-S2 satellite TV.

With WinTV-HVR-5525 HD you can receive DVB-S and DVB-S2 satellite TV, DVB-T and DVB-T2 from a TV antenna, DVB-C from a digital cable TV network and analog television (PAL, NTSC and Secam) plus FM radio. You can also receive video from analog sources via composite video.

WinTV card connections



SAT in: input for satellite antenna (parabolic mirror)

TV in: input for TV antenna or cable connection

AV in: input for the enclosed A/ cable for connecting a video source

IR in: for the remote control infrared sensor.

2

For satellite reception, connect the cable from your SAT system directly to the 'SAT' input. If the LNB of your SAT antenna requires more than 350 mA of current, should the aux. LNB power connection on the circuit board with a power plug from Power supply of the PC system can be connected, as it is also used for connecting floppy Disk drives (FDD) is used.

For digital terrestrial reception, connect the cable from your DVB-T antenna with the input 'TV IN'.

If you are receiving analog TV or DVB-C, connect the cable from your cable connection (TV) with the input 'TV IN'.

Connect the infrared sensor to the IR input of the WinTV card and place so that the infrared rays from the remote control can reach the sensor.

Installing the WinTV v10 application for Windows

Note: Please disable your antivirus software for the duration of the software installation. We find that sometimes antivirus apps block the temporary folders needed for the installation of WinTV

Note: An Internet connection is required for download and software activation.

You will find the website and directions on the **WinTV v10 Download and Activation code** card along with the **Activation code** for WinTV v10.

The WinTV v10 download can be found here:

www.hauppauge.com/wintv10

Step 1:

Download the WinTV v10 installer by clicking the download button. The WinTV v10 Installer is normally saved in your **Download folder**

3

Step 2:

Run **wintv10setup** from the Download folder on your PC. Halfway through the installation, a message will pop up asking for you to enter the Activation Code.



Step 3:

At the **Activation required** screen, click on **Enter Activation code** and enter the activation code which was printed on the **WinTV v10 Download and Activation code** card. You do not need to enter the dashes, and you can use upper or lower case characters.



Step 4:

When the installation is complete, you will find two new icons on your Windows desktop: the **WinTV application** icon and the **WinTV Advanced Options** icon. The WinTV Advanced Options icon, when clicked, has a number of useful WinTV v10 utilities such as to Empty EPG, Erase channel database and others.

Double click on the **WinTV icon** and the WinTV application will run. **On the first run of WinTV, it will automatically go through the TV source selection and WinTV will scan for channels.**

Set the check mark according to the connected signal and click on **Next**.

If you receive DVB-T via antenna or DVB-C via cable, select the country and region. If your region is not listed, choose the preset selection.

If you are receiving analog TV via cable, select the country and "Cable".

4

If you have connected an external video source using the included A / V cable, select "External inputs (Composite / S-Video)".

For SAT reception, select the satellite to which your SAT antenna is aimed. In German-speaking countries this is usually "19.2E ASTRA 1F, 1G ...".

Tip: If you select "19.2E ASTRA (German)", only German-speaking channels are scanned, which means that the channel list remains clearer.

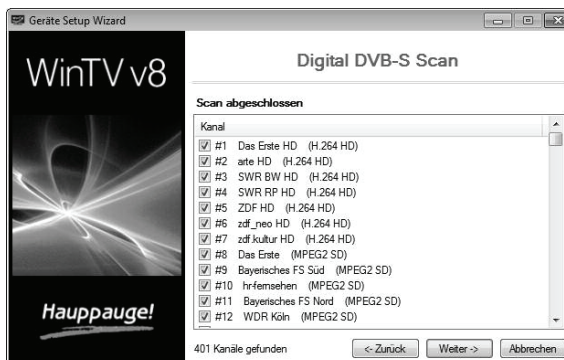
It is recommended not to tick "Consider encrypted channels".

Click **Next** to start the search.

Stations found are listed during the search.

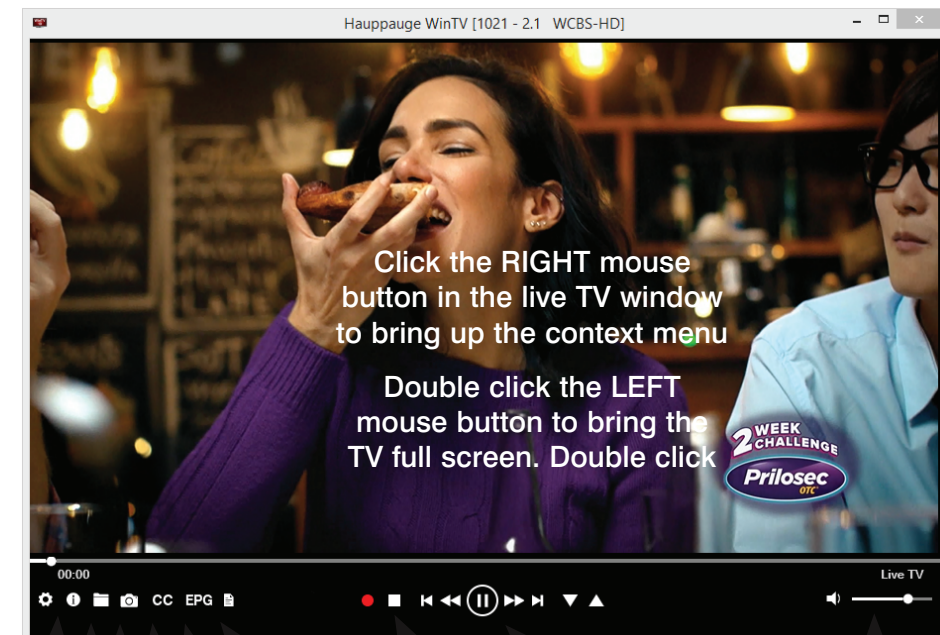
When the search is complete, click Next to save the channels found.

Note: if you complete the channel scan and no channels are detected, you can try the following: check your antenna connections, reposition your antenna, add an antenna signal booster, or get a larger antenna. Information on rescanning for TV channels can be found here: www.hauppauge.com/rescan



5

Using the WinTV v10 application



Click the **RIGHT** mouse button in the live TV window to bring up the context menu

Double click the **LEFT** mouse button to bring the TV full screen. Double click

- Settings menu
- Program Information Now/Next
- Snapshot TV recordings folder
- Close Captions
- EPG Program Guide
- Record button for manual recording
- Program Pause controls
- Audio Volume and Mute

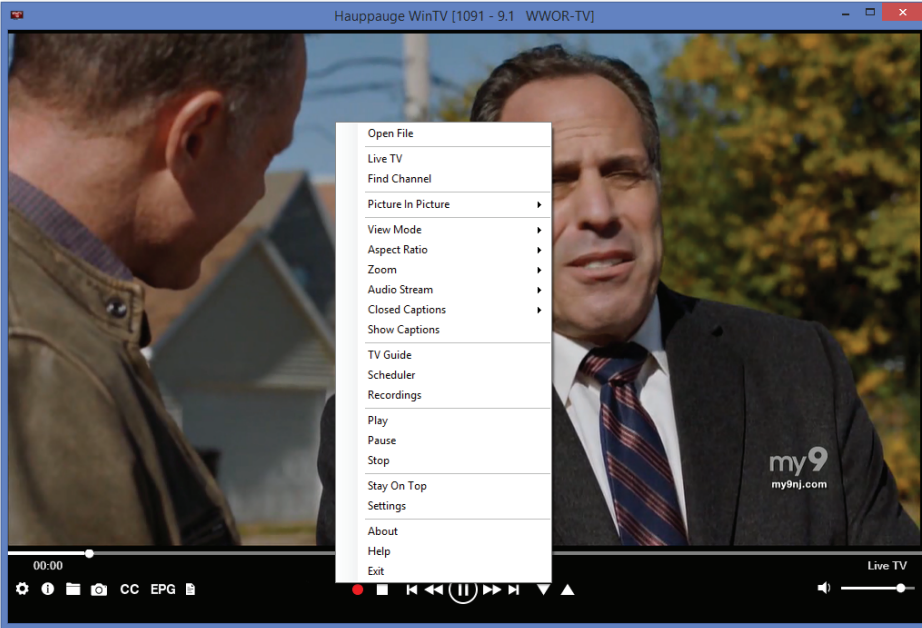
6

The WinTV v10 Menu

The Main WinTV Menu (context menu)

Right-click inside the TV window or click on the **menu button** on the WinTV toolbar to display the **Context Menu**. The following options are available.

«**Open file**» Open up a TV recording or other video file for playback in the WinTV



7

(delete) existing schedule entries.

To schedule a new recording, click on the Add button. You will need to select the channel, set the start time, duration etc. and confirm with a click on the Record button.

Note: *The WinTV application does not have to be running for a scheduled recording to work, but your PC will need to be either turned on or in Standby (not Hibernate). All scheduled recordings are performed in the background by the task "WinTVRec.exe". If a recording is started while you are watching live TV, WinTV will display the TV program being recorded.*

«**Settings**» Click the Settings button to open the **WinTV Settings** window.

«**Settings**» **General:** Select the language and the preferred Audio and subtitle languages. You can also specify the video renderer to be used and the TV shape.

«**Settings**» **Capture:** Specify where the recordings, pause files and snapshots will be stored.

«**Settings**» **Devices:** To rescan for TV channels, select the device you wish to configure from the list and click on Tuner Setup.

«**Settings**» **All Channels:** You can enable or disable the listing of channels with the **select box in the first column**. The Context menu allows you to select all channels, to delete the selected channel(s), to watch the selected channel or to display details about the channel.

«**Settings**» **Favorites:** Here you can define groups of your favorite channels.

«**Settings**» **Advanced Options:** From this menu you have options for:

- Automatically starting TV when WinTV v10 opens
- Disable the Now/Next channel information
- Disable any On Screen Display graphics
- Auto convert the standard .TS recordings to the .mpg format

«**Settings**» **Decoders**

10

window.

«**Find Channel**» This brings up the Channel List. Click on a channel entry to select this channel for watching. To filter the channel list, type in a channel name (or a part of the name). Click on the Pin-Button to permanently show the channel list. The channel list will also be displayed if you just enter any character (a - z) in live TV mode.

«**Picture in Picture**»

There are four ways to use the Dual Tuner function on WinTV-dualHD:

1. Recording up to two overlapping TV programs: you can schedule up to two overlapping TV shows from the TV Guide or manually. Using the dual tuners is automatic as long as you do not schedule more than two overlapping recordings.

2. Watch one live program while another program is being recorded: you can watch one live program in WinTV v10 and continue watching, when a scheduled recording takes place. The free tuner is used automatically for the recording.

3. Watch with Picture-in-Picture: in **Picture in Picture**, click **Two Tuner**. You will now see the WinTV window with a Picture-in-Picture window. to select a channel, in **Picture in Picture** select **Find Channel** and choose your channel.

4. Watch two separate WinTV windows, each with their own TV channel: in **Picture in Picture**, click **Dual Window**. You will now have two completely separate windows, each with their own TV program.

«**View Mode**»

The Decoders section allows you to test and use third party video/audio decoders. (The use of third party decoders is an unsupported feature but helps in some situations.)

Infrared Remote Control

Note: the infrared remote control is compatible with WinTV V10 and Windows Media Center.

Preparations

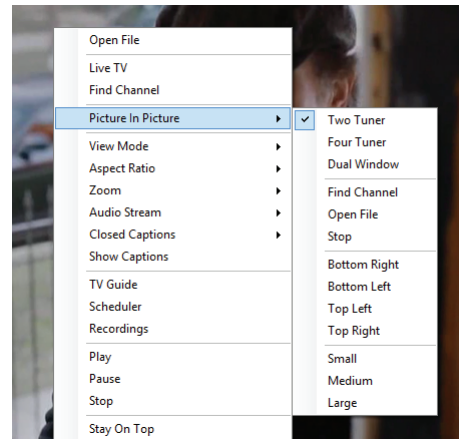
1. Make sure the batteries are inserted into the infrared remote control.
2. Plug the IR Receiver cable into the 'IR in' connection on the WinTV card.

Use of the infrared remote control

The software for the remote control is loaded via the Autostart folder in the Windows Start menu when Windows starts ("AutoStart IR"). When ir.exe is loaded, you will see a small black remote control in the information area in the Windows task bar.

Notes on Using the Remote Control

- When using the remote control, point it towards the end of the IR Receiver cable.
- The WinTV application only responds to the remote control if it is the active window.
- To restart the IR receiver program, run the "Restart IR" shortcut in the Start menu or in the WinTV Advanced Options folder on your Desktop.



8

Normal, No Title and Fullscreen are available. In **Normal** view all control elements and buttons are visible. In the **No Title** view only the TV image is shown. In the **Fullscreen** view the TV image fills the whole screen. You can also switch between these views by double clicking inside the TV window, or by pressing <Ctrl> W on the keyboard.

«**Audio Stream**»

If the current TV broadcast offers more than one audio stream / language, you can select the other stream / language here.

«**Show Captions**»

Select this option to display **close captions**. If close captions are available, the On Screen Display message "Captions: On" is shown for a few seconds, and close captions are displayed. If close captions are not available, the OSD message does not appear. To turn off close captions, select "Show Captions" again.

Note: *captions are recorded when making a WinTV recording. When playing back a .ts recording, captions can be displayed by selecting Show Captions.*

«**Stay On Top**»

If enabled, the WinTV application window will remain in view over any other application windows, even if it is not selected. To turn on, select "Stay On Top". To turn off, select this option again.

«**TV Guide**»

Some ATSC digital TV channels transmit Electronic Program Guide information (EPG). This information is collected and displayed in the TV Guide window. Click a program title with your mouse to see more details about the entry. To record a program, click on Record in the details view. The scheduled recording is added to the Scheduler window. To rescan all frequencies for TV Guide information, click on Update EPG.

«**Scheduler**» The Scheduler allows you to record a TV program at a certain date and time on the specified channel. It lists all scheduled recordings added by the TV Guide as well as any manual recordings that have been set. From here you can Edit or Cancel

9

WinTV Keyboard Commands

Next Channel = Plus (+)

Previous Channel = Minus (-)

Increase Volume = Page up

Decrease Volume = Page down

Show Channel List = Ctrl + L

Mute = Ctrl + M

Display Info = Ctrl + O

Stream Details = Ctrl + D

Teletext = Ctrl + T

Pause Video = Ctrl + Q

Play = Ctrl + P

Skip Ahead = Ctrl + F

Skip Back = Ctrl + R

Live (now) = Ctrl + C

Full Screen = Ctrl + W

Subtitles on / off = Ctrl + S

WinTV Settings = Ctrl + I

Start TV = Alt + T

Last Channel = Alt + P

Start Recording = Alt + R

Stop = Alt + S

Open File = Alt + F

Make Snapshot = Space Bar

Change Aspect Ratio = Ctrl +

Exit Full Screen = Esc

Troubleshooting

How Can I Rerun the Channel Scan?

To scan for channels again, in the main WinTV window click on the **gear icon** (lower left hand corner of WinTV), then select the **"Devices"** tab, click on the **WinTV-HVR-5525 or Starburst** entry and click on **"Tuner Setup"**.

Click **Next** and **Next** to start the channel scan.

A video showing how to do the channel scan can be found here:

www.hauppauge.com/rescan

11

12